



2018 III 14

1000

Seat No. :

--	--	--	--	--

Time : 2 Hours

**CLOTHING CONSTRUCTION (New Pattern)**

**Subject Code**

V	2	6	7
---	---	---	---

Total No. of Questions : 5

(Printed Pages : 4)

Maximum Marks : 50

- INSTRUCTIONS:**
- Answer **each** main question on a fresh page.
  - Write the number of the questions and sub-questions **clearly**.
  - All** questions are **compulsory**.
  - Figures to the **right** indicate **full** marks.
  - The basic bodice block and the sleeve block is provided on the last page.

- A) Answer in **1** or **2** words : **[1]**  
Type of stitching that prevents curved edges and bias cut edges from going out of shape.
- B) Answer the following in **1-2** sentences : **[1]**  
What is a combination fold ?
- C) Answer the following in **5-6** sentences : **[3]**  
Explain the points to be kept in mind if the cloth is insufficient (any 3 points).
- D) Attempt the following : **[5]**  
With the help of the given basic bodice block, show the following adaptations (any two) :
  - Side seam and waistline darts shifted to the neckline area and converted to gathers.
  - Converting waistline dart and side seam dart to a princess seam from the shoulder.
  - Shifting of side seam dart and waistline dart to the centre front edge.



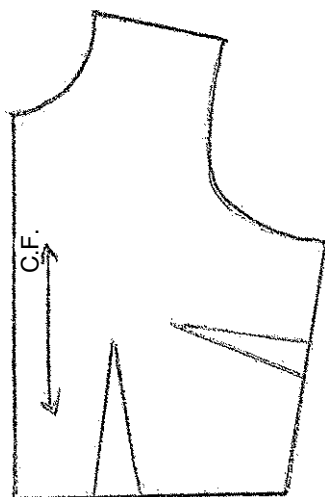
2. A) Select and rewrite the correct alternative from those given below : [1]  
Slanting triangles caused by the garment being strained over some curve or bulge of the body is  
a) Balance                      b) Wrinkles                      c) Grain
- B) Answer the following in **1-2** sentences. [1]  
What is Ease ?
- C) Attempt the following : [3]  
With the help of the given basic bodice block, show the construction of round yoke and triangular yoke.
- D) Answer the following : [5]  
Identify the causes for the following fitting problem in a blouse (**any five**).  
a) End of shoulder seam extends beyond arm joint.  
b) Diagonal wrinkles pointing towards the neck point on shoulder.  
c) Wrinkles pointing towards the shoulder blades.  
d) Neckline gapes and sags in front.  
e) Diagonal wrinkles pointing towards the arm joint on shoulder.  
f) Pulling wrinkles pointing to the top of the sleeve.
3. A) Select and rewrite the correct alternative from those given below : [1]  
An interfacing used for light weight fabric is known as  
a) Hair canvas  
b) Organdie  
c) Buckram.
- B) Answer the following : [1]  
Name the lining fabric used on the following :  
a) Brocade garment  
b) Skirts.
- C) Answer the following in **5-6** sentences. [3]  
Why are fabrics blended ?
- D) Attempt the following : [5]  
With the help of the given basic sleeve block, show the following adaptations :  
a) Bishop sleeve  
b) Leg-o-mutton sleeve.



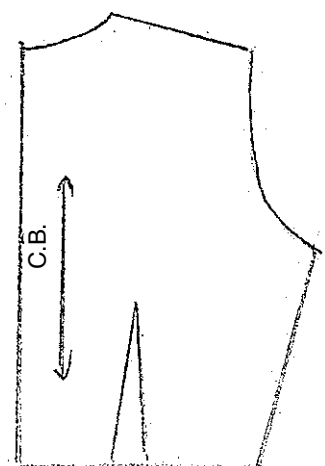
4. A) Select and rewrite the correct alternative from those given below : [1]  
A collar used for back open dresses with rounded ends in front and back is  
a) Two piece peter-pan collar  
b) Partial Roll peter-pan collar  
c) One piece peter-pan collar.
- B) Answer the following in **2-3** sentences : [2]  
Why should woollen fabrics be pressed lightly and carefully.
- C) Answer the following : [2]  
Write a note on 'Crisp and Stiff fabric'.
- D) Answer the following in **2-3** sentences : [2]  
In which fabrics do women appear feminine and delicate.
- E) Attempt the following : [3]  
With the help of the given basic bodice block, show the construction of the following :  
a) Scalloped collar  
b) One piece peter-pan collar.
5. A) Answer in **1** or **2** words : [1]  
A fastener with two parts, socket and knob.
- B) Answer in **2-3** sentences : [2]  
Why is cut-to-stock method necessary in large companies ?
- C) Answer in **2-3** sentences : [2]  
Write a note on 'Eyelet hole'.
- D) Answer in **2-3** sentences : [2]  
Where are tie strings usually used ?
- E) Draw the following : [3]  
a) Gathered skirt  
b) Pleated skirt  
c) Circular skirt.



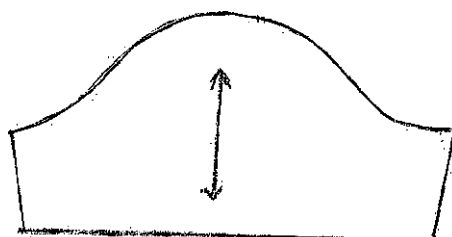
## Adults Basic Bodice Block and Sleeve Block



→ Basic bodice block front



→ Basic bodice block back



→ Basic sleeve